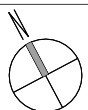


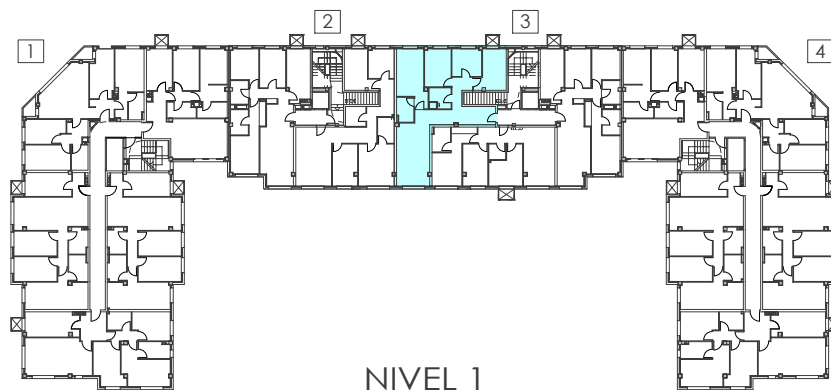
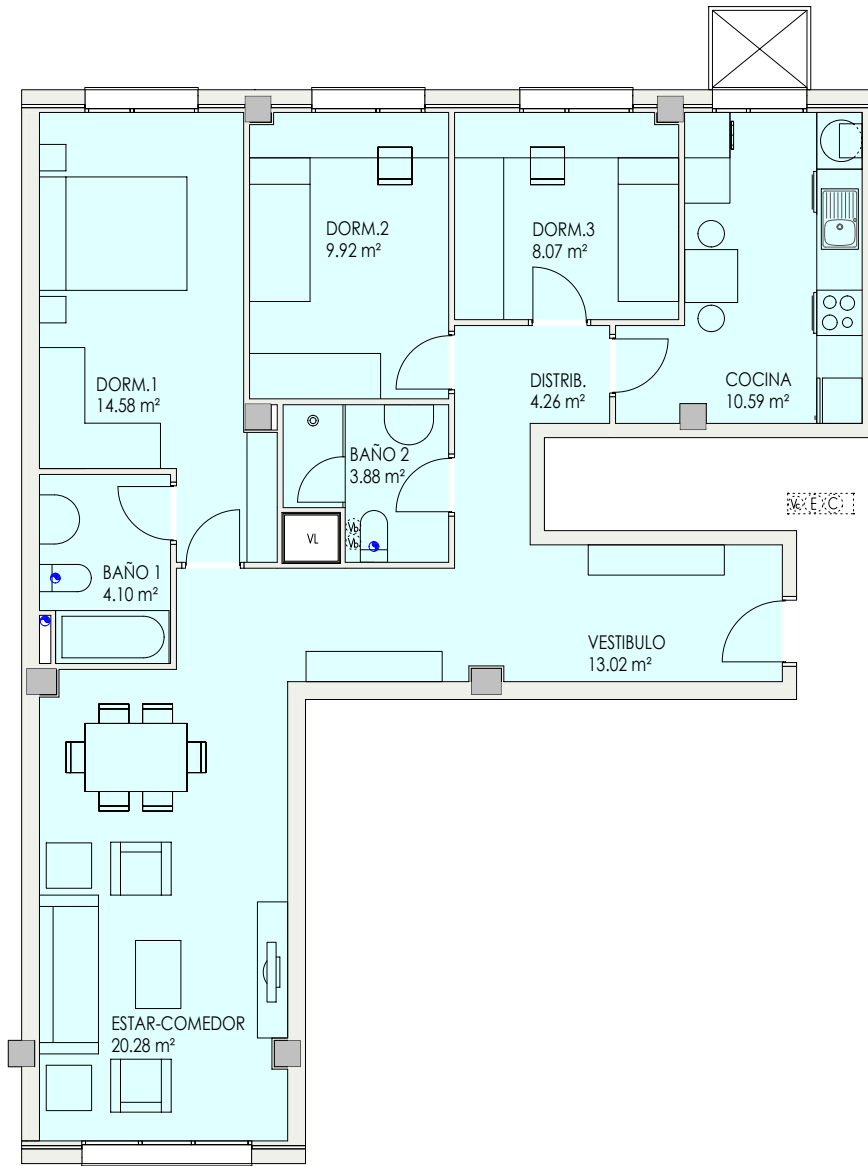
NIVEL 1

NIVEL 1

NIVEL 1		SUPERFICIES POR VIVIENDA	
PORTAL 2	VIVIENDA TIPO B - 3 dorm.	UTIL	CONSTRUIDA CON P. P.
		84,45 m ²	111,88 m ²



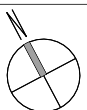
RESIDENCIAL "PEÑAS ARRIBA"
PEÑACASTILLO - SANTANDER



NIVEL 1

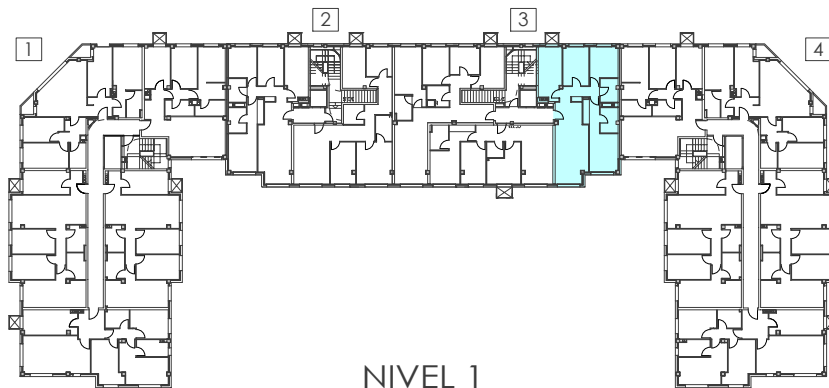
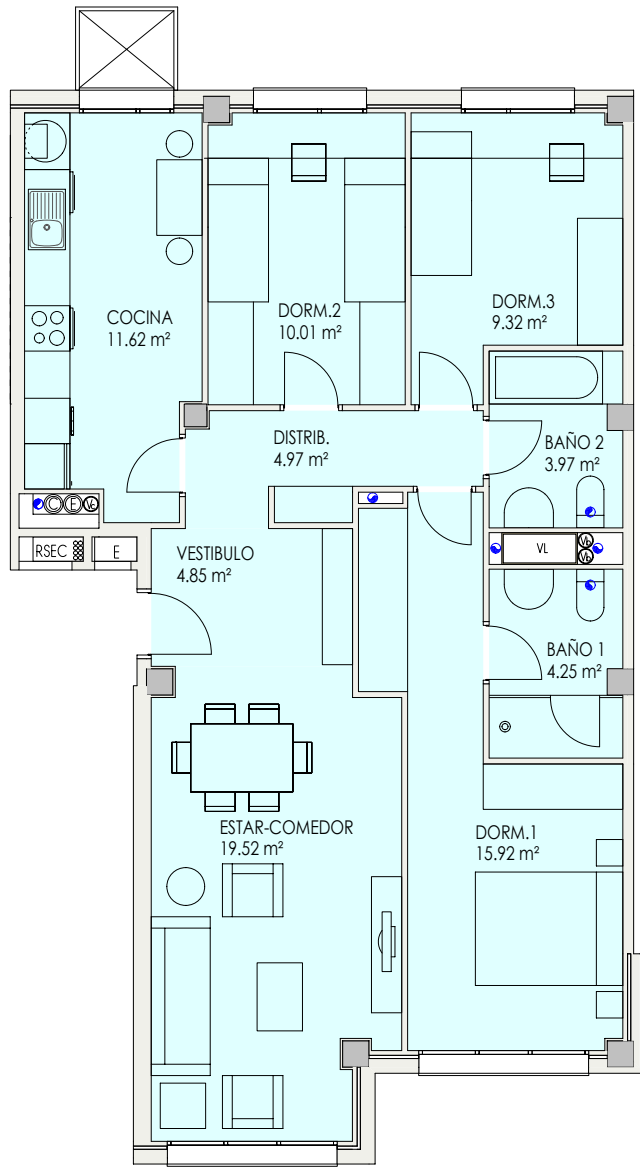
NIVEL 1

NIVEL 1		SUPERFICIES POR VIVIENDA	
PORTAL 3	VIVIENDA TIPO A - 3 dorm.	UTIL	CONSTRUIDA CON P. P.
		88,70 m ²	117,51 m ²



RESIDENCIAL "PEÑAS ARRIBA"
PEÑACASTILLO - SANTANDER

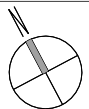




NIVEL 1

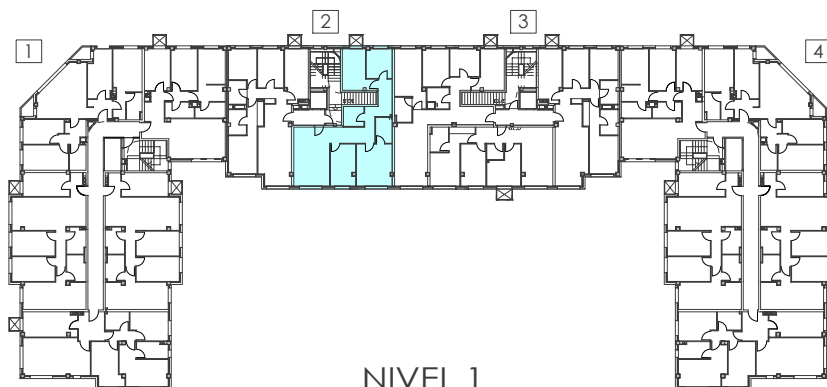
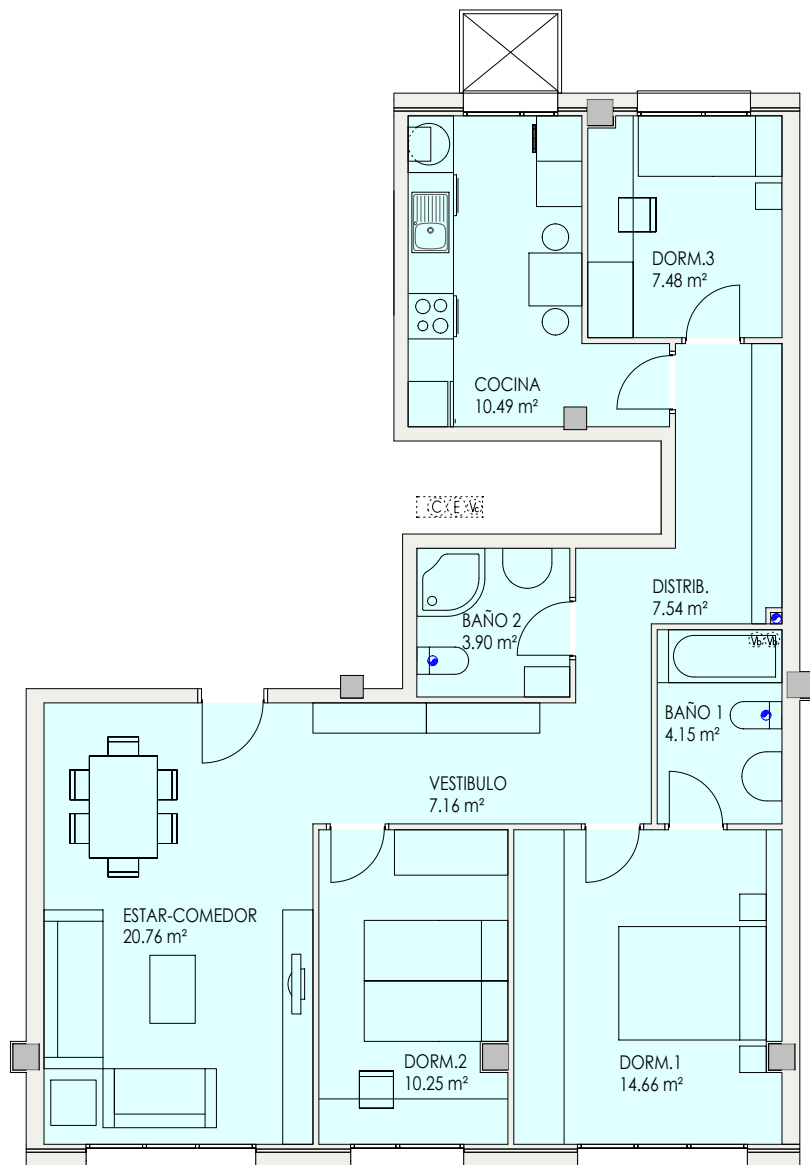
NIVEL 1

		SUPERFICIES POR VIVIENDA	
		UTIL	CONSTRUIDA CON P. P.
PORTAL 3	VIVIENDA TIPO C - 3 dorm.	84,43 m ²	111,86 m ²



RESIDENCIAL "PEÑAS ARRIBA"
 PEÑACASTILLO - SANTANDER

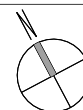




NIVEL 1

NIVEL 1

NIVEL 1		SUPERFICIES POR VIVIENDA	
PORTAL 2	VIVIENDA TIPO A - 3 dorm.	UTIL	CONSTRUIDA CON P. P.
		86,39 m ²	114,46 m ²



RESIDENCIAL "PEÑAS ARRIBA"
 PEÑACASTILLO - SANTANDER

